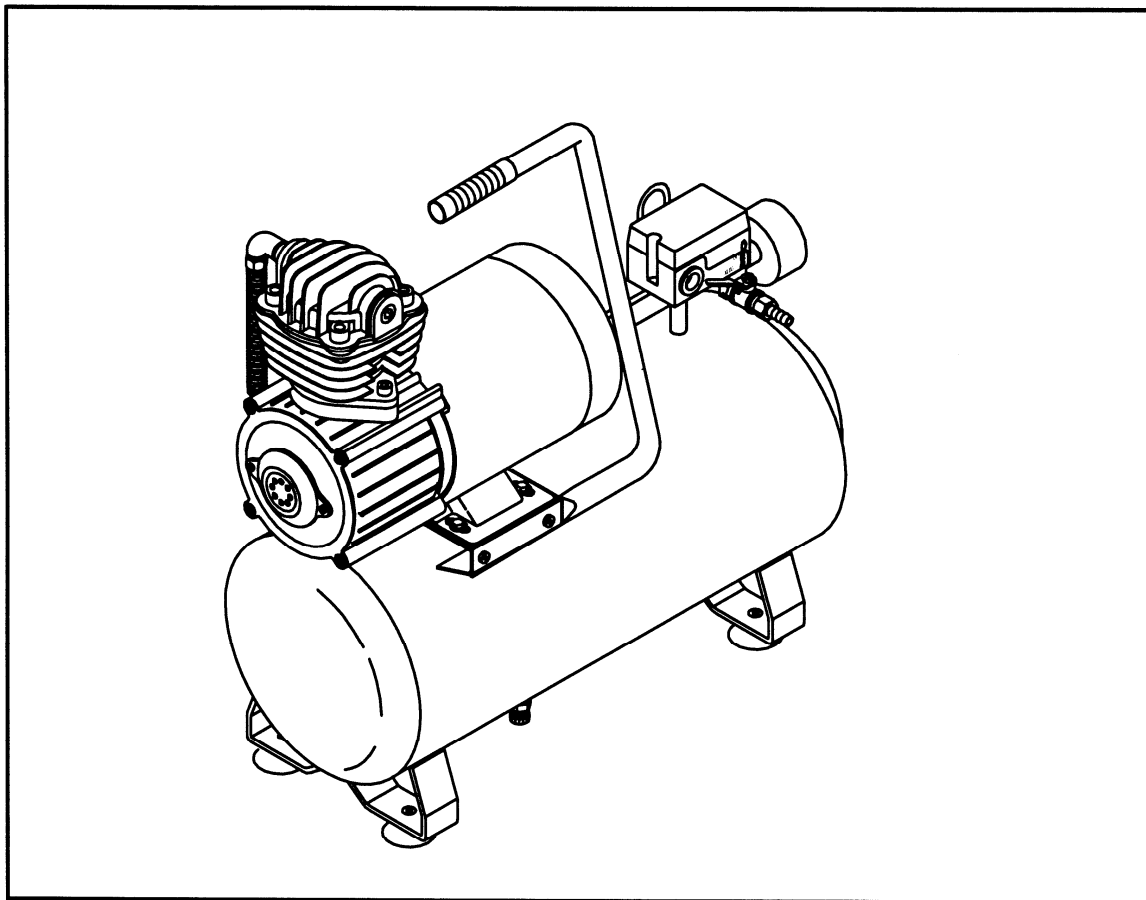


12-Volt Portable Air Compressor

Operation Manual



Model	HP	Volts	Max. Pressure	Tank Capacity
JH12TC-16	3/4	12 DC	120 psi	3 Gallon

IMPORTANT

Carefully read and understand these instructions before operating this compressor.

Read and understand the following information and instructions included with this product before using. This information is for your safety and to prevent damage to the product.

CAUTION

1. Do not disassemble. Disassembly or attempted repairs if accomplished incorrectly can create electrical shock hazard. Refer servicing to qualified service agencies only.
2. Connect compressor to a direct power supply. Never plug into car's cigarette lighter socket. Compressor must be used with an inline 50 AMP circuit breaker or fusible link. (Failure to use circuit breaker or fusible link may result in severe damage to compressor and/or vehicles electrical system.)
3. The air compressor and tank assembly should always be kept dry during operation and stored in a dry location.

WARNING

1. This product should never be left unattended when turned on.
2. Always turn off after using and store in a dry place.

DANGER : To reduce risk of explosion or fire....

1. Do not use the product near combustibles, or where aerosol (spray) products are being used.
2. Do not pump combustible liquids or vapors with the product or use in or near an area where flammable or explosive liquids or vapors may exist.
3. Do not use this product near flames.

SAFETY

1. Close supervision is necessary when this product is used near children. Never allow children to operate this unit.
2. Never operate this product: If it has a damaged power cord, if it is not working properly, if it has been dropped or damaged, or if it has fallen into water. Return the product to a service center for examination and repair.
3. Keep the power cord away from heated surfaces and sharp edges.
4. Never block any air openings (inlet) of the product or place it on a soft surface where the openings may be blocked. Keep all air openings free of lint, dirt and other foreign objects.
5. Never use while sleeping or drowsy.
6. Never drop or insert fingers or any other object into openings.
7. Do not operate this product where oxygen is being administered.

8. Wear safety glasses or goggles when operating this product.
9. Use the product only in well-ventilated areas.
10. Do not use air tools or attachments without first determining maximum air pressure for that tool or attachment.
11. Never point air nozzle or air sprayer toward a person or any part of the body.
12. All electrical products generate heat. To avoid serious burns never touch unit during or immediately after operation.

Failure to observe the above safety precautions could result in severe bodily injury, including death in extreme cases.

DAILY START UP

1. Make sure drain valve is closed.
2. Turn the ON/OFF switch to the ON position.
3. **WARNING:** High temperatures are generated by the electric motor and pump. Do not touch compressor while it is running. Allow it to be cooled before handling or servicing. Keep children away from compressor at all times.
4. **NOTE:** (If there is a regulator on the air compressor.) When adjusting from a higher to a lower pressure. Turn the knob counterclockwise past the desired setting, and then turn clock-wise to the desired pressure setting.
5. If product will not be used for more than 30 minutes, turn the ON/OFF switch to the OFF position until next use.

DAILY SHUT DOWN

1. Turn the ON/OFF switch to the OFF position.
2. Bleed air to less than 30 psi. Open the drain valve on the tank.

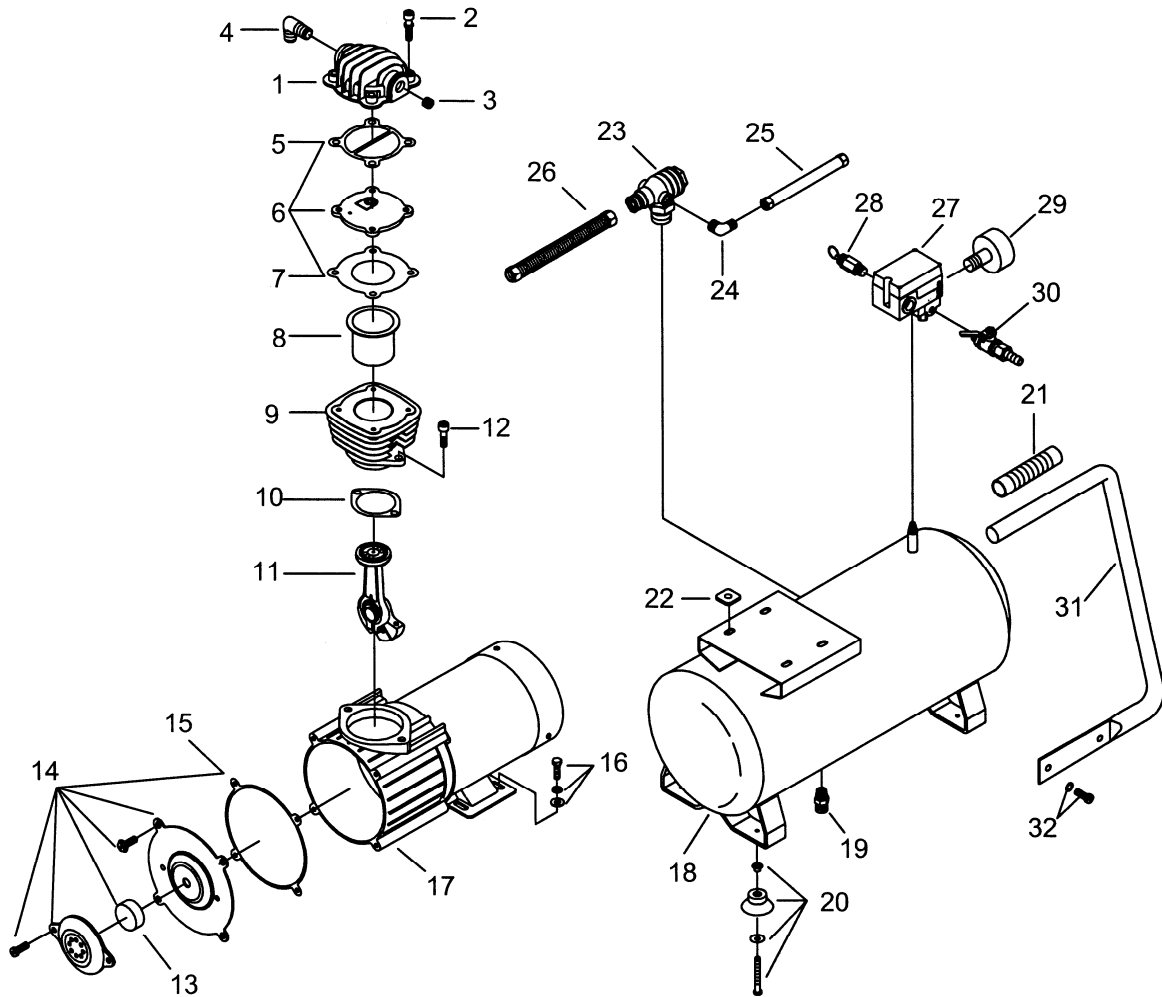
MAINTENANCE

1. Lubrication is not necessary. The compressor never needs lubricating. Applying oil to any part could result in polluted air delivery to the air-handling equipment. This product has no user serviceable parts. When not in use, store in dry place. **DO NOT ABUSE PRODUCT.**
2. Check all air fitting connections and hoses for air leaks daily. Small air leaks will result in excessive wear on the product.

WARNING

This compressor is precision-made, and carefully assembled and wired. Therefore do not disassemble or attempt to repair these products. Only qualified personnel should perform repair service.

MODEL : JH12TC-16



SPARE PARTS LIST

NO: JH12TC

REF. NO.	DESCRIPTION	PART NO.	QTY.	REF. NO.	DESCRIPTION	PART NO.	QTY.
1	Cylinder head	3101061	1	17	Motor set	3B8-DD0712VTN	1
2	Allen bolt set	3B01-M06*035V	4	18	Air tank	3401395D	1
3	Plug	2B14-ST03E	1	19	Drain valve	2405011	1
4	Exhaust elbow	2N06-03T03H	1	20	Rubber pad	3433005-A	4
5	Cylinder head gasket	2G01-015H	1	21	Grip	2432003	1
6	Ex.valve seat assembly	3B11-DD07A	1	22	Body block	2439008	4
7	Valve seat gasket	2G03-008H	1	23	Check valve	2414036RX	1
8	Cylinder liner	3210007	1	24	Unloading elbow	2N06-01T02H	1
9	Cylinder	3201075	1	25	Unloading tube	3B2-02*300F	1
10	Cylinder gasket	2G04-024	1	26	Exhaust tube set	3B2-03*340	1
11	Rod set	3B34-DD07	1	27	Pressure switch	2E21-045TB	1
12	Allen bolt	2B01-M08*020	2	28	Pressure relief valve	2406021T	1
13	Filter element	2142014	1	29	Pressure gauge	2D12-20D14KS	1
14	Front cover set	3309031-A	1	30	Ball valve	2413001	1
15	Front cover gasket	2G07-014	1	31	Handle	3432100	1
16	Hexagon bolt	3B00-FM06*015VW	4	32	Hexagon bolt	3B00-FM08*015V	1

(2C03-108SIA-1)1512