

SPOILER INSTALLATION INSTRUCTIONS

TOOLS & MATERIALS NEEDED

1. Drill (*Electric or Cordless*)
2. 3/32" (2mm) drill bit
3. 9/32" (6.5 mm) drill bit
4. Phillips head screwdriver
5. 12 volt battery source
(*You can use a car battery or charger*)
6. Masking tape
7. Small quantity of rust inhibiting primer (*optional*)
8. Felt tip pen
9. Electrical tape or wire connectors
10. Alcohol or grease remover

HARDWARE KIT (*Not included with Tape-Mount Spoilers*)

Supplied in the box are one spoiler and a plastic bag containing the following:

1. Set of locator strips
2. Set of M6 plain washers
3. Set of M6 screws
4. Set of pedestal gaskets (*may be attached from factory*)

NOTE: Hardware kit will be taped to spoiler

PAINTING (*Instructions for Primed Spoilers*)

Eagle Wings™ are blow molded, made from durable Polyurethane/ABS and finished in a high quality primer. Inspect spoiler for imperfections. If required, use catalyzed body filler, rub lightly with a Scotchbrite™ pad or wet sand with fine sandpaper before spraying top coat. It is advisable to test a small sample of the paint on the underside of spoiler to ensure good adhesion and that no solvents in the paint will react with the Polyurethane or ABS. For best results Polyurethane and ABS should be air-dried, however baking up to 50° Celsius/107° Fahrenheit is acceptable.

LED INSTALLATION & TESTING (*Where applicable*)

Use an independent 12 volt battery or a battery charger to test the LED. Touch one wire to each of the positive and negative terminals. If the LED does not light, reverse the wire and try again. **NOTE: Reversing the wires will not harm the LED. Every LED has been tested prior to shipping to ensure ease of installation.**

If the car is equipped with a third brake light, splice the wire from the LED with the third brake light wires. If the car does not have a third brake light, a connection can be made using the hot wire from the car's brake lights. Secure all connections with electrical tape or wire connectors.

DRILL-MOUNT INSTALLATION

1. Clean the truck lid and dry it thoroughly.
2. Insert a plastic locator strip around each of the mounting holes. A small piece of masking tape will hold it temporarily in place. The tabs should be parallel to the spoiler. **(See Illustration 1) Not necessary for non-drill applications.**
3. Carefully position the spoiler and find the best position. **Stand back and view the vehicle from all angles to satisfy yourself of its fit and styling.** Check from below to ensure that the mounting holes will clear any obstruction. **(See Illustration 2)**
4. Tape down the tabs of the locator strips using masking tape. **(See Illustration 3)**
5. Carefully remove the spoiler, leaving the locator strips in position.
6. Drill a 3/32" (2mm) pilot hole through the center of the locator strip.
7. Remove the locator strips and enlarge the holes using 9/32" (6.5mm) drill bit.
8. Locate and drill hole for LED wires. (*where applicable*)
9. Treat all holes with rust inhibiting primer. (*optional*)
10. Insert the mounting screws and washers through the truck lid into the pedestals of the spoiler, being careful not to over tighten the screws.
11. Remove all metal shavings from trunk and surrounding areas.

TAPE-MOUNT INSTALLATION

1. Clean mounting area thoroughly with alcohol or a mild degreaser.
2. Peel back the corner of the red liner on the 3M tape and remove all small pieces. Avoid touching exposed tape. **(See Illustration 4)**
3. Peel back while holding in place.
4. Gently press spoiler into place on the deck lid, hatch or rear glass. Once satisfied with placement, firmly press down on spoiler to ensure adhesion along entire vehicle surface. Continue to apply pressure or use masking tape to keep unit from lifting.

Spoiler should be waxed to ensure proper protection against elements.

Illustration 1



Illustration 2



Illustration 3

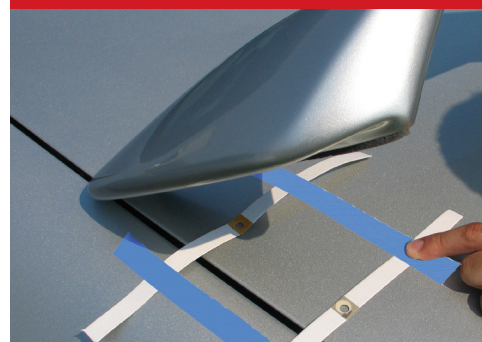


Illustration 4



209 Radio Road, Almo, KY 42020

Toll Free 800.636.3367

Local 270.753.5585 Fax 877.626.3367

www.EagleFlight.com sales@jaeeagle.com

